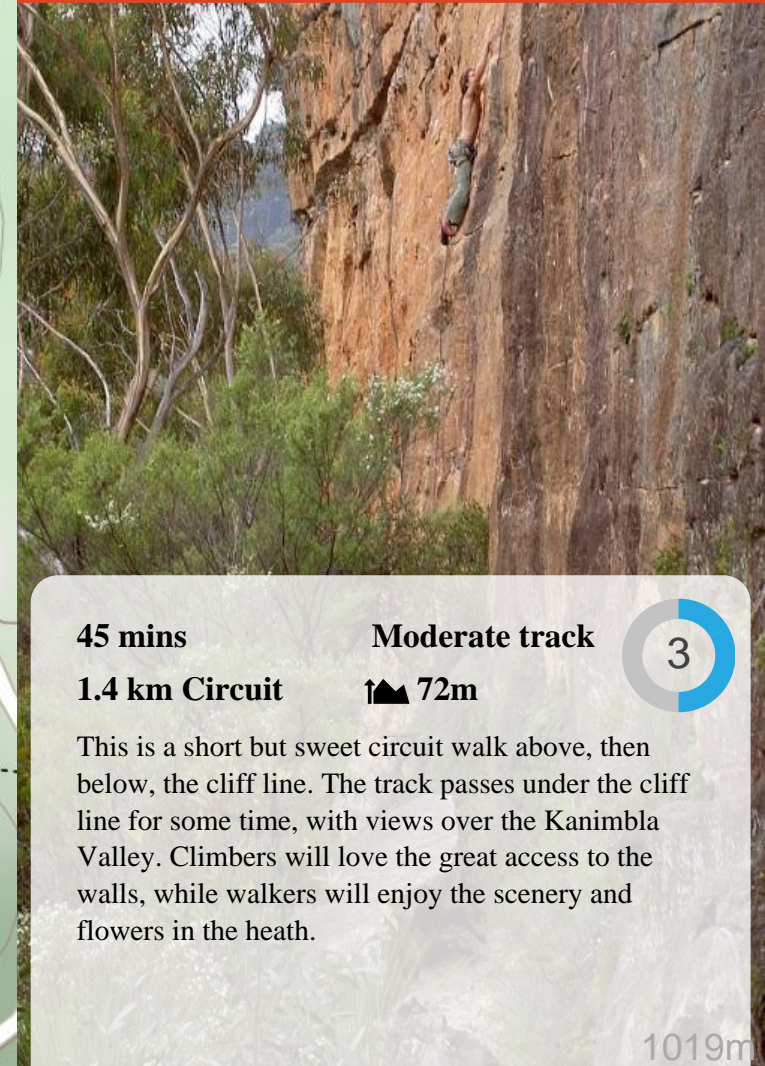


Walls Ledge (Short)



45 mins

Moderate track

3

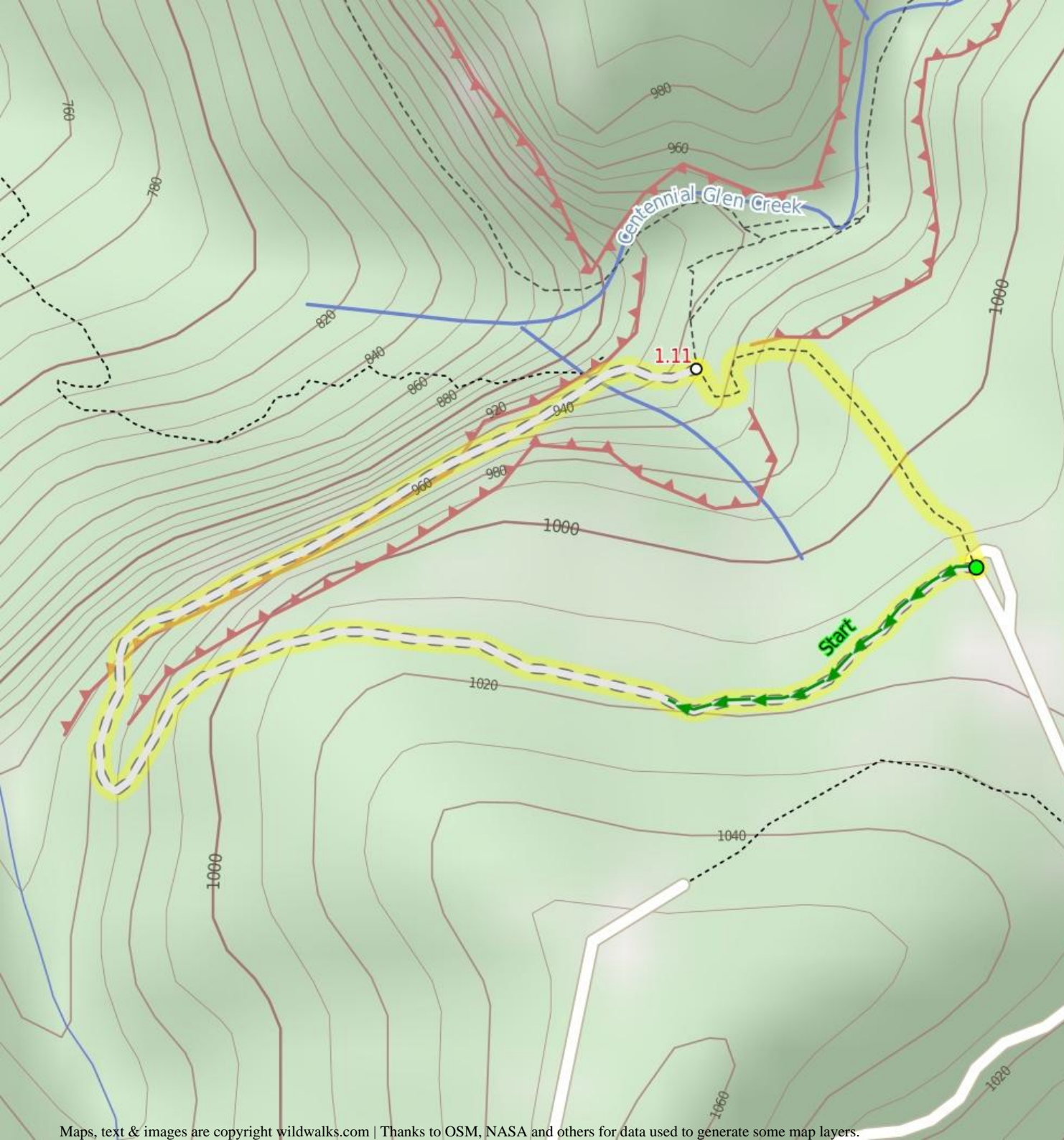
1.4 km Circuit

72m

This is a short but sweet circuit walk above, then below, the cliff line. The track passes under the cliff line for some time, with views over the Kanimbla Valley. Climbers will love the great access to the walls, while walkers will enjoy the scenery and flowers in the heath.

924m

Blue Mountains LGA



Are you ready to have fun?

Please ensure you and your group are well prepared and equipped for all possible hazards and delays. Check park closures, weather information and Fire Danger Rating before setting out. Optional side trips and alternate routes noted are not included in this walks overall grade, length or time estimate. Please allow extra time for resting and exploring areas of interest. The authors, staff and owners of wildwalks take care in preparing this information but will not accept responsibility for any inconvenience, loss or injury you may experience. Please take care, have fun - Happy Walking.

Getting there You can get to Centennial Glen Rd Carpark (gps: -33.6389, 150.2754) by car, train or bus. Car: There is free parking available.

This is a circuit, so you will finish back at the start.

Find up to date and more information including; travel directions, weather, park closures and walker feedback at <http://wild.tl/wl>

0 | Centennial Glen Rd Carpark

(1.1 km 25 mins) From the car park, this walk heads to the service trail gate parallel with the road (approximately in line with the end of the grassy median strip) and then onto the trail behind. The track passes through the heath for a while until it nears the cliff edge and narrows. The walk continues around the hill through the heath for some time to then begin a descent over a rocky surface with cut-in stairs. The track winds right, keeping with the cliffline while looking out to the valley on the left. Be mindful of climbers and falling objects along these cliffs. The cliffline disappears behind scrub as the track reaches a man-made basin filled by drips from the cliff roof above. The track rounds out of this glen to climb up the hill, through heath to the signposted intersection.

1.11 | Int. Walls Ledge Track and Centennial Glen Rd Carp

(280 m 11 mins) Veer right: From the intersection, this walk heads up the stairs that round the rocky outcrop (on the left). The walk winds up to look out over the Kanimbla Valley before continuing up through the heath for a short time to the car park.

